



# Sonate

FÜR KONTRABASS UND KLAVIER

(nach Op. 5, Nr. 2.)

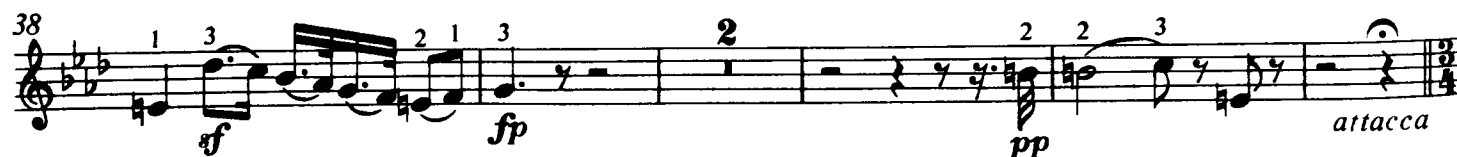
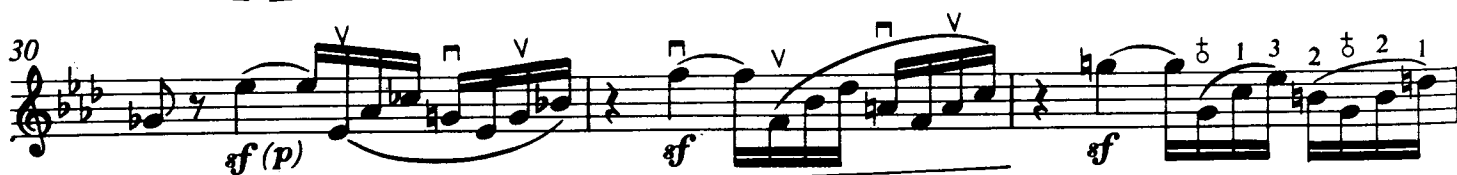
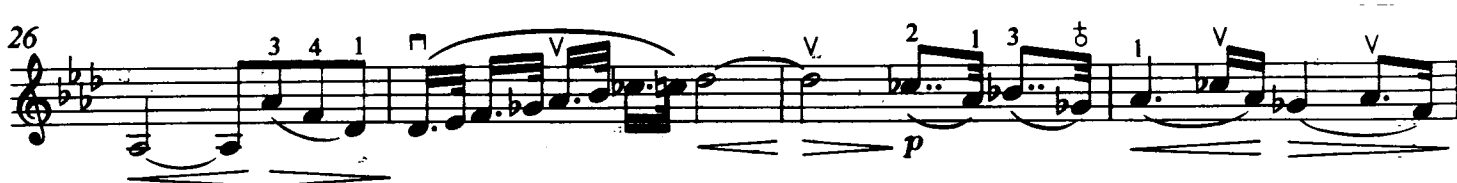
L. van Beethoven

(1770—1827)

Bearbeitet und praktisch eingerichtet von Norbert Duka



Adagio sostenuto ed espressivo



Allegro molto più tosto presto

Musical score for Contrabasso, measures 1-120. The score is in 4/4 time with a key signature of three flats (B-flat, E-flat, A-flat). It features various dynamics (p, f, ff, dolce, ritard., cresc.), articulations (accents, slurs), and technical markings like 'Kl.' and 'V'. Fingerings and bowings are indicated throughout.

Measures 1-11: *p*, *p*. Fingerings: 3, 2, 3, 2, 1, 1.

Measures 12-28: *p*, *f*. Fingerings: 2, 2, 1, 8, V.

Measures 29-38: *f*. Fingerings: 1, 2, 4.

Measures 39-49: *ff*, *f*, *f*. Fingerings: 1, 2, 4, 4, 1, 1.

Measures 50-57: *ff*, *(ff)*, *f*. Fingerings: 3, 3.

Measures 58-69: *f*, *f*, *p*. Fingerings: 1, 1, 2.

Measures 70-84: *p*. Fingerings: 6, Kl., V, 2, 1, 4, 2, 1, 3, 2, V, 4, 1, 4, 1, 3, 1, 1, 2.

Measures 85-94: *dolce*, *f*, *f*. Fingerings: 3, 2, V, 1, 2, 2, 1, 2, 1, 2, 1, 3, 2, 1.

Measures 95-107: *fp*, *pp*, *p*, *cresc.*, *f*, *f*, *f*. Markings: *ritard.*, 1, 1.

Measures 108-119: *f*, *f*, *f*, *f*, *ff*, *f*, *f*, *f*, *f*. Fingerings: 2, 4, 1, 4, 3, 1, 3, 2, 1, 2, 1, 4, V.

Measures 120-124: *p dolce*. Fingerings: 5, Kl., 2, 1, 2.



270 *p* *p* *p*

284 *cresc.* *ff* *sf* *sf* *sf*

300 *sf* *sf* *sf*

309 *sf* *p*

322 *p*

338 *dolce* *sf* *sf* *fp* *ritard.*

350 *pp* *p* *cresc.* *sf* *sf* *sf* *sf* *sf* *sf* *sf*

364 *ff* *sf* *sf* *sf* *sf* *sf* *sf* *sf* *5* *Kl.*

381 *p dolce* *cresc.*

393 *f* *ff* *sf* *sf*

409 *sf* *sf* *sf* *sf* *sf* *p* *cresc.*

420 *ff* *D°*

428 *(sf)* *(sf)*

436 *ff* *sf* *sf* *p* *pp*

446 *fp*

460 *p* *p* *sf* *p* *sf*

473 *p* *sf* *p* *sf* *p* *pp*

489 *pp* *ff* *sf*

499 *sf* *sf* *sf* *ff*

Rondo Allegro

10 *p*

15 *f*

20 *fp* *fp*

27 *p* *f*

37 *p* *p dolce*

45 *p* *mf*

52 *p*

60 *fp*

68

73 *p* *sf* *sf* *f*

78 *sf* *sf* *sf* *sf* *sf*

84 *sf* *sf* *sf* *sf* *sf*

90 *sf* *sf* *f* (*f*)

100 *p*

103

106 Musical notation for measure 106, starting with a treble clef and a key signature of one flat. It features a sequence of eighth notes with fingerings 1, 2, 1, 2, 1, 3, 1, 2, 1, 2, 1. The measure concludes with a dynamic marking of *fp*.

110 Musical notation for measure 110, continuing the eighth-note pattern with various articulations and dynamics.

116 Musical notation for measure 116, featuring a bass clef and a key signature of one flat. It includes fingerings 1, 3, 2, and 3.

119 Musical notation for measure 119, showing a transition in dynamics from *f* to *sf*.

125 Musical notation for measure 125, starting with a dynamic marking of *p*.

128 Musical notation for measure 128, continuing the melodic line.

131 Musical notation for measure 131, ending with a dynamic marking of *p (cantabile)*.

135 Musical notation for measure 135, featuring a dynamic marking of *f*.

144 Musical notation for measure 144, starting with a dynamic marking of *p*.

147 Musical notation for measure 147, including fingerings 3, 2, 1, 2, 3, 3, and a dynamic marking of *(mp)*.

153 Musical notation for measure 153, featuring fingerings 1, 1, and 5, and dynamic markings *p*, *sf*, and *sf*.

166 *mf*

174 *f sf sf sf*

179 *f*

184 *sf*

190 *sf sfp sfp*

200 *p p dolce*

207 *p p mf*

214 *p*

220

226 *p cresc. - fp p sfp*

234 *p sf sf sf sf*



239 *8* 2 3 1 2 1 1 1 2 1 2 2 1 1 2 V 1

243 *ff* *ff* *ff* *f* *f*

249 *ff* *p* *cresc.*

256 *p* *f*

263

269 *p*

273

276

279 *(pp)* *p* *ten.* *f* *f* *p*

285 *f*

298 *ff*