

Emmanuel Chabrier

España

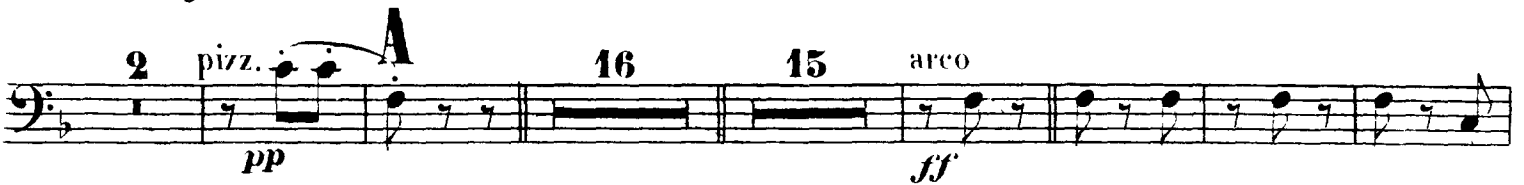
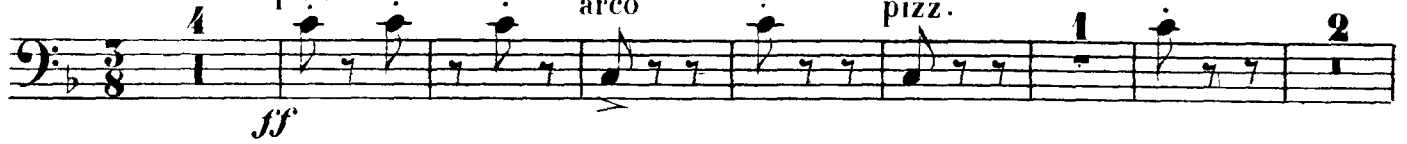
DOUBLE BASS.

All. con fuoco

pizz.

arco

pizz.



pizz.
f

arco
p *p* *cresc. poco a poco*

f *pizz.*
p

4 *4* *appassionato e arco*
ff

sostenuto
f *cresc. molto*

E **F** **10**
ff

Tromb. *C.B. pizz.* *f* *dim.* *p* *Tromb.*

C.B. pizz. *mf* *dim.* *p* *Tromb.*

C.B. arco. *ff* *4* *Bass*

C.B. pizz. **G** *Tromb.* *pp*

Chabrier — Espana
DOUBLE BASS.

Orchestra Musician's
CD-ROM LIBRARY

C.B. arco
f *ff* *ff* *sec*

16 Cors et Bons
pizz. *p* C.B.

Tpt I
s C.B. arco *f* *pizz.* *p* *pp*

J
p

arco
f

cresc sempre

K
pizz. *p*

4
pp *cresc.* *f* arco

Detailed description: This is a page of musical notation for the Double Bass part of Chabrier's 'Espana'. The score is written in bass clef with a key signature of two flats (B-flat and E-flat). It consists of ten staves of music. The first staff begins with a dynamic of *f* and includes markings for 'C.B. arco', *ff*, and 'sec'. The second staff starts at measure 16 and includes 'Cors et Bons', *pizz.*, and *p*. The third staff features a 4-measure rest followed by 'arco' and *ff*. The fourth staff includes 'Tpt I', *s*, 'C.B. arco', *f*, *pizz.*, *p*, and *pp*. The fifth staff is marked with a large 'J' and *p*. The sixth staff has 'arco' and *f*. The seventh staff is marked with 'cresc sempre'. The eighth staff has a large 'K', *pizz.*, and *p*. The ninth staff has a 4-measure rest, *pp*, 'cresc.', and *f*. The tenth staff ends with 'arco' and *f*.

DOUBLE BASS.

ff

sf *f* **L** Poco più mosso **20** Pist.

Tromp. *sf* C.B. *sf* pizz. *sf*

sf arco *mf e cresc* *cresc molto*

ff *mf* **3** **N 8** Vols

Bsn I *mf* C.B. arco *cresc.* *f*

0 *ff* *ff*

2 *ff*

ff